

SmartClick

for Windows

**Click, Double-Click,
drag just by pointing!**

Version 1.70 Release 3

User's Guide

SmartClick: for Windows; Click, Double-Click, drag just by pointing!; Version 1.70 Release 3; User's Guide

IMG Real World Press

179 Niblick Road #454
Paso Robles, CA 93446
1-800-889-0987 (US & Canada)
+1-818-701-1579
+1-818-936-0200 (fax)

Website: <http://www.imgpresents.com>

To report errors, please send a note to ts@imgpresents.com

IMG Real World Press is a division of Innovation Management Group, Inc.
SmartClick, Version 1.70 Release 3, 11/7/2014

Copyright © 2003-2014 by Innovation Management Group, Inc.

Production/Editing/Composition/Indexing/Publishing: IMG Real World Press

Notice of Rights

All Rights Reserved. No part of this book may be reproduced or transmitted in any form by any means, electronic, mechanical, photocopying, recording, or otherwise, without the prior written permission of the publisher. For information on obtaining permission for reprints, excerpts, or other uses, please contact ts@imgpresents.com

Trademarks

My-T-Mouse[®], My-T-Pen[®], My-T-Touch[®] and My-T-Soft[®] are registered trademarks of Innovation Management Group, Inc.

Any other product name, service, or company identified within the book is used for informational or editorial purposes only, and with no intention of infringement of any trademark. No such use is intended to convey endorsement or other affiliation with this book.

Notice of liability

The information in this book is distributed on an "As is" basis, without warranty. While every precaution has been taken in the preparation of this book, IMG Real World Press shall not have any liability to any person or entity with respect to any loss or damage caused or alleged to be caused directly or indirectly by any information contained in this book or the product(s) described. The publisher takes no responsibility for any errors or omissions.

ISBN 978-0-557-96964-7

Table of Contents

Part I. Getting Started.....	ix
1. Quick Start	1
2. Getting Started	7
SmartClick User's Guide	7
Using this Guide	9
General Information	11
SmartClick Welcome!.....	12
What is SmartClick?.....	13
Why do I need SmartClick?	15
Features.....	16
What You Need.....	18
Installing / Un-Installing	
SmartClick	19
Starting SmartClick	23
Licensing Information	24
License Manager	26
SmartClick Setup.....	45
Commonly Asked Questions	46

Customer Support.....	47
Product Catalog	50
Part II. Using SmartClick	56
3. SmartClick Operation	58
SmartClick Operation Notes.....	58
4. SmartClick Setup	61
SmartClick Setup.....	61
SmartClick Palette	63
Dwell Clicking.....	64
Set On/Off Key	65
Set Activation Key	66
Single Clicker	67
Release Required	68
TouchScreen (No Real Button Clicks).....	68
Play Sounds	69
Quiet Sounds	70
Drag Prompts.....	70
Info Window	71
Configure System	71

Dwell Time	74
Jitter Distance	75
Go to Idle After Action.....	76
5. SmartClick Palette.....	79
SmartClick Palette	79
SmartClick Buttons	80
Double Click.....	81
Drag	82
Auto-Repeat.....	82
Preferences	84
Hide Palette	84
Move Palette	85
Active/Idle	85
Close Window	86
CONTROL Key.....	87
SHIFT_Key	87
ALT Key	88
ESCAPE Key.....	88
Right Click.....	89
Right Double	89
L-R Chord Click	90

Middle Click.....	91
Middle Double.....	91
View & Arrange Palette.....	92
Button Appearance	92
Palette Layout.....	95
Palette Operations.....	95
Auto Fit to Screen.....	96
Attract to Screen Edges	96
Bump Screen Edge to Flip Orientation	97
Orientation.....	97

Part III. SmartClick Technical

Documentation	99
6. SmartClick Advanced Notes	101
SmartClick Advanced Notes ...	101
SmartClick Final Release Notes 103	
SmartClick Settings / INI / Registry Notes.....	104

SmartClick Files & File Notes & Installation Information ..	119
SmartClick Command Line Options	124
Index.....	127

Part I. Getting Started

General information about this guide, the product, installation, and getting started (how to get SmartClick running).

Chapter 1 - Quick Start contains details on the fastest way to install & begin using

SmartClick

Chapter 2 - Getting Started has more information about this guide, SmartClick features, Installing / Un-Installing, Licensing Information, Standard Settings, using SmartClick Setup, Commonly Asked Questions, and information about Customer Support.

Chapter 1. Quick Start

Install SmartClick

There are various ways to obtain IMG software, including (but not limited to):

- Web based / Internet download from IMG's web site
(<http://www.imgpresents.com/demo.htm>)
- Shipped CD / DVD physical media - IMG Product Disc
- Download ISO image file and burn IMG Product Disc CD / DVD
- USB Flash Drive (pre-installed or installed from USB media web download)
- Single file install (from local network / internet / other media)
- IMG on-line account

Note: IMG Software is built by product and major version with minor releases. There is only 1 unique build, but can be packaged / delivered / obtained in various ways. When unlicensed, the software acts as a demonstration / evaluation copy, and operation will be limited in length or run-time or capabilities. Once licensed (typically via License Key and Serial Number, or OEM / Company-wide / Enterprise licensing), the software will operate with no limitations.

Recommendation: The quickest and easiest method for obtaining IMG software is to download the current version from IMG's web site (<http://www.imgpresents.com/demo.htm>). Download, then run the file to install. Test, review, play with, and verify the software meets your needs and requirements.

When ready to purchase, go to the IMG License Manager, and click on the "Purchase License Now" button. If working on a machine without internet access, use the Standard or MSI single file download, or use a Product Disc option. Separately, purchase the license for the product directly on the website - once you have your License Key and Serial Number, you can install and license the software.

The following outlines a standard retail Product Disc based install. For other options, refer to notes and details available at the source. In general, the approach is to install the software, then license the software. The Product Disc Installation Assistant provides an easy way to accomplish these two tasks.

- In Windows, insert the CD or DVD - the

AutoRun feature will load the Installation Assistant - you may Install a licensed product , Install other product demos, or view Release Information. **If you have a Certificate of Authenticity, enter your License Key, Serial Number, and Name to Install and automatically License.**

- If AutoRun is not enabled:
- In Windows, Click on the Start Button
- Select Run
- Select D:SETUP, or type D:SETUP (or E:SETUP if CD/DVD drive E:, etc.)
- Press (ENTER) or click on OK
- In Windows Vista, you may not have the Run Option - select Computer, your CD/DVD drive, and open Setup
- Answer the questions and follow the instructions on your screen

Note: You may also Un-Install SmartClick by running SETUP.EXE After SmartClick has been properly installed. (SmartClick Setup will ask you if you wish to Un-Install.) This has been provided as a convenience to the user. It is recommended that you use the Control Panel | Add/Remove Programs Icon to remove SmartClick.

Start SmartClick

Click on the Start Button, and open the Start Menu.

Select (All) Programs, then Select SmartClick. The SmartClick menu will have selections corresponding to the icons in the group. Select SmartClick to begin operation.

The SmartClick palette will appear, and SmartClick will begin normal operation. If the

mouse cursor is held steady (within the jitter distance limits), and automatic click will occur. Use the SmartClick palette to select other mouse, events, and actions. Use SmartClick Setup to modify the palette, change dwell settings, or configure other SmartClick options.

Chapter 2. Getting Started

SmartClick User's Guide

Version 1.70 Release 3

11/7/2014

A Utility for Windows

Information in this document is subject to change without notice and does not represent a commitment on the part of Innovation Management Group, Inc. The software described in this document is furnished under a license agreement or nondisclosure agreement. The software and documentation may be used or copied only in accordance with the terms of

this agreement. It is against the law to copy the software on any medium except as specifically allowed in the license or nondisclosure agreement. The purchaser may be allowed to make a back-up copy. No part of this manual or guide may be reproduced or transmitted in any form or by any means, electronic or mechanical, including photocopying, recording, or information storage and retrieval systems, for any purpose other than the purchaser's personal use, without the express written permission of Innovation Management Group, Inc.

This manual and product represent over 11 years of on-going development, testing, and support. There are numerous legal, license, and cross-license agreements associated with the end product. Licensed users of the software are one of the most important aspects of the entire process that brings this manual and product

into existence. Please be respectful of all parties involved.

Trademarks:

Microsoft Windows is a trademark of Microsoft Corporation.

My-T-Mouse[®], My-T-Pen[®], My-T-Touch[®] and My-T-Soft[®] are registered trademarks of Innovation Management Group, Inc.

Copyrights

SmartClick Copyright © 2003-2014 Innovation Management Group, Inc.

SmartClick User's Guide Copyright © 2003-2014 Innovation Management Group, Inc.

All Rights Reserved. Software Subject to Restricted Rights.

Using this Guide

This guide is a comprehensive collection of details, notes, and information about SmartClick. Portions are incorporated within the product itself, and it is also available in various forms (e.g. printed, on-line, PDF, etc.).

Important User Information

This guide is for users who are familiar with Windows, its basic concepts, and how to operate within Windows. If you are not, the information you may need to fully utilize SmartClick and this guide may be limited. You may wish to review Windows help, tutorials, and other available information on using and operating Windows before continuing using this guide.

Conventions used within this guide

Note: Notes and other additional information will be indicated in this way

Warning

Special and other important details to pay close attention to will appear this way

General Information

SmartClick for Windows

General Information

SmartClick allows a user to operate Windows and Windows applications entirely without the need to physically click on the buttons on your

mouse, trackballs, and joysticks. Left clicks, right clicks, double clicks, drag and move, etc. are all possible with SmartClick. For detailed technical information, refer to the SmartClick Advanced Notes.

OK

The OK button accepts and saves all current settings.

Cancel

The Cancel button ignores all changes and does not save settings.

Help

The Help button opens the Contents of the SmartClick Help file.

SmartClick Welcome!

Welcome to SmartClick for Windows 8 / 8.1!

SmartClick provides automatic operation of clicks, drags, double-clicks, common keystrokes, and special actions all via a hover (or dwell) type interface. This enables a user that cannot click or trigger button presses to completely operate Windows just by pointing.

Enjoy!

What is SmartClick?

SmartClick enables all the functionality of an accomplished user with a normal mouse, but accessible entirely just by pointing!

Double-clicks, right-clicks, drags, and keyboard options are just the beginning. Useful features such as Auto-Repeat (mouse clicks or

up/down arrows), Close Window, and Escape key add even more capabilities. So if you can move the mouse cursor (whether by mouse, trackball, joystick, laser-eye tracker, or any other means), you can completely run & operate Windows quickly & easily!

SmartClick provides basic functions such as mouse clicks, drag functionality, and double-clicks, along with other useful actions and events to allow a user that cannot click or use buttons or switches a way to operate Windows. With SmartClick, Windows can be operated entirely from a pointing device - just by pointing! Utilizing the dwell concept (a hover and wait approach), a user can position the mouse cursor to a location, and then wait for the required dwell time delay (keeping the mouse pointer within the jitter distance area), and a mouse click (or any of the selected functions from the SmartClick palette) will

occur. This creates a simple, yet powerful interface that allows any user to run Windows just by being able to move the mouse cursor.

Why do I need SmartClick?

If you can move a pointing device (it is easy to move the mouse cursor), but don't have the ability (or find it uncomfortable) to perform a clicking action; or can only operate one button; or cannot press and hold a button for click-and-drag; then SmartClick provides the tools and additional actions that can make operating and doing tasks in Windows simple and easy.

With SmartClick, if you can point and move the mouse cursor, then you can run Windows, and do common tasks, simply by pointing! All you need to do is select the action from the

SmartClick palette, and use the automated dwell settings to trigger (perform) the action!

Features

- Customizable Palette of SmartClick options
- Select up to 17 different functions
- Arrange in any order
- Horizontal or Vertical layout, with on-the-fly changing available
- Attract to screen edges, auto-sizing
- Palette icons can be sized larger or smaller, with spacing & borders
- Text descriptions available
- Select colors for palette, icons, or text

- Dwell Controls
- Dwell timing, with feedback testing
- Configurable Jitter distance to better manage selections / user capabilities
- Info Window to display visually countdown / selected option
- Sounds
- Sounds for aural feedback (optional)
- Standard or Quiet Sounds
- Drag Prompts for help with dragging operations
- Keyboard controls
- Activation On or Off (Dwell active or Idle)
- Palette On or Off (SmartClick Visible)
- Advanced Options

- SingleClicker - option for users who can click, but have trouble with double-clicks, other
- buttons, or holding buttons (drags)
- TouchScreen - special mode so SmartClick can be run from a touchscreen device

What You Need

To run SmartClick you need the following equipment (hardware requirements):

- IBM 80386 or higher or compatible
- 200 mb hard disk space available
- 32 mb memory or higher
- Windows 8 / 8.1
- Any Windows supported pointing device

Installing / Un-Installing SmartClick

There are various ways to obtain IMG software, including (but not limited to):

- Web based / Internet download from IMG's web site
(<http://www.imgpresents.com/demo.htm>)
- Shipped CD / DVD physical media - IMG Product Disc
- Download ISO image file and burn IMG Product Disc CD / DVD
- USB Flash Drive (pre-installed or installed from USB media web download)
- Single file install (from local network / internet / other media)
- IMG on-line account

Note: IMG Software is built by product and major version with minor releases. There is only 1 unique build, but can be packaged / delivered / obtained in various ways. When unlicensed, the software acts as a demonstration / evaluation copy, and operation will be limited in length or run-time or capabilities. Once licensed (typically via License Key and Serial Number, or OEM / Company-wide / Enterprise licensing), the software will operate with no limitations.

Recommendation: The quickest and easiest method for obtaining IMG software is to download the current version from IMG's web site (<http://www.imgpresents.com/demo.htm>). Download, then run the file to install. Test, review, play with, and verify the software meets your needs and requirements.

When ready to purchase, go to the IMG License Manager, and click on the "Purchase License Now" button. If working on a machine without internet access, use the Standard or MSI single file download, or use a Product Disc option. Separately, purchase the license for the product directly on the website - once you have your License Key and Serial Number, you can install and license the software.

The following outlines a standard retail Product Disc based install. For other options, refer to notes and details available at the source. In general, the approach is to install the software, then license the software. The Product Disc Installation Assistant provides an easy way to accomplish these two tasks.

- In Windows, insert the CD or DVD - the

AutoRun feature will load the Installation Assistant - you may Install a licensed product , Install other product demos, or view Release Information. **If you have a Certificate of Authenticity, enter your License Key, Serial Number, and Name to Install and automatically License.**

- If AutoRun is not enabled:
- In Windows, Click on the Start Button
- Select Run
- Select D:SETUP, or type D:SETUP (or E:SETUP if CD / DVD drive E:, etc.)
- Press (ENTER) or click on OK
- In Windows Vista, you may not have the Run Option - select Computer, your CD/DVD drive, and open Setup
- Answer the questions and follow the instructions on your screen

Note: You may also Un-Install SmartClick by running SETUP.EXE After SmartClick has been properly installed. (SmartClick Setup will ask you if you wish to Un-Install.) This has been provided as a convenience to the user. It is recommended that you use the Control Panel | Add/Remove Programs Icon to remove SmartClick.

Starting SmartClick

Click on the Start Button, and open the Start Menu. Select (All) Programs, then Select SmartClick. The SmartClick menu will have selections corresponding to the icons in the group. Select SmartClick to begin operation. SmartClick will start automatically the first

time you load SmartClick. A standard/basic default palette will be displayed. Hover (dwell) for 2 seconds (default dwell time) will result in left-click at the mouse cursor location.

The following icons will also be available in the SmartClick group:

SmartClick - runs SmartClick!

SmartClick Setup - Configuration options

SmartClick Help - Help (this file)

Licensing Information - Displays current license status of SmartClick, allows instant licensing

Licensing Information

SmartClick uses the IMG License Manager to manage the licensed use of this product. If

unlicensed, the product will run as demo (i.e. a demonstration version). In the demo (unlicensed) mode, SmartClick will run for about an hour, and then exit, displaying the license manager (announcing that it is unlicensed). You may restart SmartClick up to 100 times (the demonstration period limit). After the demonstration period is over, SmartClick will not operate unless it is licensed. For extended evaluation and testing purposes, please contact IMG Customer Service for an evaluation license. Once licensed, the operation will not be limited in any way.

The most common methods of licensing are electronic (web/e-mail based) and by certificate (Certificate of Authenticity). In both cases, there will be a registered serial number, and a license key made available once a license has been purchased - these need to be entered

into the IMG License Manager to activate a valid license. For further details, refer to the IMG License Manager.

Note: There are numerous license schemes (including OEM, site, & enterprise licenses) available to meet the needs of all our customers. If you have any licensing questions, please contact Innovation Management Group, Inc. directly.

License Manager

In order to License SmartClick, the correct License Key and Serial Number must be entered into the IMG License Manager, along with some text for the Customer (and optional

Company) text areas. The License Key and Serial Number can be found on the Certificate of Authenticity, or in the Software Unlock Codes e-mail.

The IMG License Manager will operate with an IMG Personal License. This is a system based license that can license any supported IMG product per platform. Licensing is done through the internet and your Build-A-Board.com account, accessed via the "Retrieve System License" button.

SmartClick License

Manager - Authentication

The screenshot shows a dialog box titled "IMG License Manager - Authentication". It contains the following sections:

- License Information - Version 1.70.24242 [SMC170]**
This product is locked in Demo mode. To unlock, register, and license this product, a registered Serial #, License Key and Customer Name must be entered. Please enter the details from your Certificate of Authenticity. To Purchase or Apply a License, click on the Purchase / Apply License Now button (Internet required).
Buttons: **Purchase / Apply License Now**, **Retrieve System License**
- Information to provide with Payment**
System ID: C170-1AD5-DDF3-7814
Copy System ID to Clipboard
The System ID is required for proper licensing. It is important the System ID be obtained from the already installed software. To use this System ID, click Purchase / Apply License Now (above).
- Enter Unlock Codes (Sent after payment approved)**
License Key:
Serial No.:
Customer:
Company:
Additional License Options / Support
- Contacting Innovation Management Group, Inc. & License Information
World Wide Web: <http://www.imgpresents.com/order.htm>
E-mail: order@imgpresents.com
USA & Canada (Toll Free): 1-800-889-0987
- Buttons: **Finish**, **Register Later**

When the "Purchase / Apply License Now" button is used (if applicable to the product), you will have the option of selecting a Full Support License or the IMG Personal License.

Professional / Full Support License

The License Key and Serial No. entries are a

matched pair, and will work together to unlock the software. The Customer entry is required (i.e. some text must be entered in the Customer text area), but is not part of the license unlock process. The Company text area is optional, and will be shown as the Source when the product is licensed.

To quickly and easily license the software (on a system that has internet access), simply click on the "Purchase / Apply License Now" button. Once connected to IMG's website, you will be asked to enter billing information and payment information. Once paid, your order will be processed, and you will receive a confirmation e-mail and a separate e-mail with license information. Once the order is fully processed, you can then click the "Retrieve Purchased License" button to automatically license your system.

System ID Note: The System ID is used to accurately match the Product and Version you wish to license with the License Information provided. If the system you wish to License does not have Internet Access, you can use the Copy System ID to Clipboard to accurately copy the System ID to the clipboard (which can be saved in a text file or other document and moved to a system that does have Internet Access).

Note: The "Retrieve System License" uses a unique identifier to automatically license your system (which is only sent if the "Purchase / Apply License Now" is used). If you try this on a different system, or after a system update or re-install (or after a change to this unique ID), the software will not license automatically. You will either need to enter the License Key

and Serial Number, or go into Additional License Options (see below) and use your Order Confirmation Number and Order E-mail to retrieve the license.

Important Note: Be sure to save and/or print your Order Confirmation number (with Order E-mail), along with your License Key and Serial Number in case you need to re-license the software in the future (Operating System Re-install, hard disk reformat, new system, etc.)

Certificate of Authenticity Note: For Electronic Licenses, and Certificate of Authenticity can be retrieved on IMG's website:

<https://www.imgpresents.com/orders/account>

This requires a valid License Key and

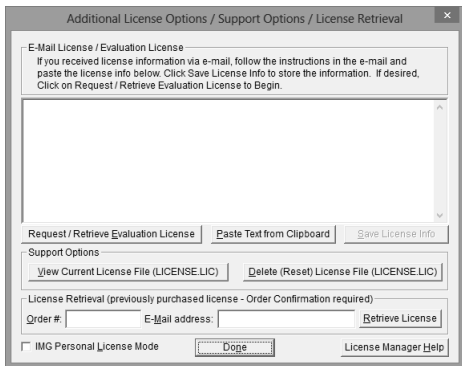
Serial Number. Once entered, you may view a PDF of the Certificate, or download the Certificate of Authenticity PDF file (for printing or saving).

The IMG Personal License

Purchase of a new IMG Personal License creates a Build-A-Board.com account, and the system will be licensed automatically via the "Retrieve System License". If you already have a Build-A-Board.com account, you can Apply a license via the "Purchase / Apply License Now" button.

SmartClick License Manager - Additional License Options

Professional / Full Support License



The Additional License Options section has tools and options to Enter or Paste Evaluation or Other License Information; Request and Retrieve Evaluation Licenses; Support Options to View and Delete (Reset) the License file; and a mechanism to retrieve a Purchased License by entering the Order Confirmation Number and the Order E-mail address.

Often, interested parties want to review or test

the software without the demonstration license limitations, and to accommodate this, IMG makes available Evaluation Licenses. These Evaluation Licenses are fully functional licenses, but with a date limit (when the evaluation date has passed, the software will return back to the Unlicensed, Demonstration mode).

Evaluation Licenses may be requested at the Product Download pages on the website, or by using the Request / Retrieve Evaluation License button here. Note that all Evaluation License requests are reviewed, and Evaluation Licenses must be created by IMG personnel (generation is not automated).

An Evaluation License sent via e-mail contains a block of text that has the license details for the License Manager. When sent via e-mail, the text can be copied and subsequently pasted into the text area here (Paste Text from

Clipboard), then saved to enable (set) the License Information (Save License Info).

Alternatively, if an Evaluation License is Requested, then after processing, it may be automatically Retrieved directly by clicking the Request / Retrieve Evaluation License button. Please refer to any additional information provided by the messages shown when using this approach.

The View Current License File (LICENSE.LIC) button will load the file LICENSE.LIC from the installation folder. This file contains the actual license information for the product, or the license information used to validate a License Key and Serial Number.

Note: Because an Evaluation License uses this same file, the Delete (Reset) option should be used if Licensing the product after using an Evaluation License.

The Delete (Reset) License File (LICENSE.LIC) will remove the existing LICENSE.LIC, then copy the file LICENSE.ORG to LICENSE.LIC (both in the installation folder). The file LICENSE.ORG is the "as shipped" license file, and should be the License File when using a License Key and Serial Number to license the software.

Note: For License Purposes, using the Support Option to Delete (Reset) the License File is essentially the same as un-installing, then re-installing the software. Because this option is quicker and simpler, it is the preferred approach to resolve any license issues. Note that manually copying the file LICENSE.ORG to LICENSE.LIC (in the installation folder) performs the same operation as this option.

The License Retrieval Option will retrieve License Information from IMG's Website for electronically purchased licenses. The Order Confirmation Number and Order E-mail is required (which appear on the Order Confirmation page provided after successfully placing an on-line order, and are provided separately via an Order Confirmation E-mail).

Note: For Retrieved Licenses (via Retrieve Purchased License, and via the Retrieve License Support Option), License Key and Serial Number information is processed exactly as if this information was directly entered in the Authentication area. Therefore, all issues that may affect licensing also apply to these automated options (e.g. License File status, User permissions, etc.)

The IMG Personal License

Additional License Options / Support Options / License Retrieval

E-Mail License / Evaluation License

Use Retrieve System License on main License Page to obtain your license. Review License Details with button below. For an Evaluation license, use your Build-A-Board.com Account. You may also troubleshoot license issues on this Support Page.

License Details Go To Build-A-Board.com Save License Info

Support Options

View Current License File (LICENSE.LIC) Delete (Reset) License File (LICENSE.LIC)

License Retrieval (previously purchased license - Order Confirmation required)

Order #: E-Mail address: Retrieve License

IMG Personal License Mode Done License Manager Help

The Additional License Options section has different options when the IMG Personal License Mode is checked. The IMG Personal License is a system based license, and can be retrieved at the main license page with the "Retrieve System License" button. Most

license issues can be dealt with online at your Build-A-Board.com account. There are some advanced and support options that can be managed at the Additional License Options page.

The "License Details" button will check the System License and report the issue or issues why the license is not valid. In some cases, these details may explain the situation, and point to a corrective action.

The "Go To Build-A-Board.com" button will open a browser and go directly to the login page for your Build-A-Board.com Account.

Use "View Current License File (LICENSE.LIC)" to read the System License, and display the License details. In some cases, these details may explain the situation, and point to a corrective action.

Use "Delete (Reset) License File

(LICENSE.LIC)" to remove the System License and Reset the System ID. This action is not recommended and requires 2 confirmations, because all previous license information is destroyed, and a new System License will be required.

SmartClick License Manager - Licensed Display Professional / Full Support License



When properly Licensed, a screen similar to this will show the License Information for the product. The display of this indicates that the software is Licensed.

Note: Evaluation licenses also show this screen during the days that the Evaluation License is valid.

The IMG Personal License



When properly Licensed with an IMG Personal License, a screen similar to this will show the License Information for the product. This display indicates that the software is Licensed. For help, support, and other options, you can click on the "Go to My Build-A-Board.com Account" to open a browser and access your account online.

If you single left click on the text display box at the bottom, it will rotate through 3 different views - License Information, IMG Personal License details for the system, and results from IMG Personal License evaluation.



The second view shows License Details from the System License.



The third view shows details on how the System License was evaluated by the License Manager.

Technical Note: Professional / Support Licenses are licensed per product and the LICENSE.LIC file is located in the installation folder. The IMG Personal License is a System License, and the LICENSE.LIC is located in the Common Files area of Program Files in the

Innovation Management Group License
Manager folder.

SmartClick Setup

To run SmartClick Setup:

Open the Start Menu, Select (All) Programs, Select SmartClick, then select the SmartClick Setup icon in the SmartClick Program Group Menu.

OR

From SmartClick, click the SmartClick icon on the task bar to open the menu, and click SmartClick Setup.

If SmartClick is running while you are selecting options from the following setup

screens it will change to the new settings immediately after you click OK to save the changes. You do not need to restart SmartClick to configure it with the new settings. On each screen you may also choose to click Cancel to exit without saving the new settings.

Commonly Asked Questions

Compatibility

Does SmartClick work with all Windows Applications?

Yes.

Display

SmartClick covers too much of my Window. What can I do?

Resize and/or reconfigure SmartClick through the Palette Configuration in SmartClick Setup.

Drivers

Does SmartClick require any special drivers?

No. SmartClick works with all standard Windows drivers supplied by all well-known manufacturers.

Customer Support

SmartClick Software is backed by a support staff trained to provide you with fast, courteous service. Over the years, IMG has astounded individuals at the quality of its software and its support. So that we can continue to focus our resources on development and providing high-quality products & support, we do

appreciate your assistance in reviewing the help, manual, and support information available at our website to see if the problem or question has already been addressed. However, if you need assistance beyond what the manual, tutorial, help files, and on-line support database provide, please contact IMG Customer Service:

Innovation Management Group, Inc.

Customer Service

179 Niblick Road #454

Paso Robles, CA 93446

USA

1-800-889-0987 (US & Canada)

+1-818-701-1579

+1-818-936-0200 (fax)

<cs

[http://www](http://www<imgpresents.com)

To open a Technical Support case and create a support ticket, please refer to <https://www.imgpresents.com/orders/support/tech>

Please provide, or have the following information ready when you ask for assistance:

- SmartClick version number, update level.
- Registered serial number (or if running demo)
- Make and Model of your computer.
- Windows version number, any Service Packs or major updates.
- A description of the problem.
- If possible, a list of the steps required to recreate the problem.
- If you have seen an error code, record and report the number.

- Additional information may be required, such as monitor type, type of pointing device, amount of RAM in your system, other software running (anti-virus, spyware, virtual machine, etc.).

Product Catalog

**Innovation Management Group, Inc.'s
Products**

Commercial Division Products...

**Indestructible Keyboards & Indispensable
Utilities!**

My-T-Soft® Build-A-Board

The Ultimate Tool for creating and modifying

On-Screen Keyboards, buttons, and Panels.
My-T-Soft Family, plus Cross-Platform
Support

My-T-Pen[®] for Windows

On-Screen Keyboards & Utilities for Pen
Based Systems

My-T-Touch[®] for Windows

On-Screen Keyboards & Utilities for
Touchscreens

My-T-Soft[®] Basic for Windows

Basic On-Screen Keyboards and access to
online database of boards. Free Edition, or
IMG Personal License.

My-T-Soft[®] Professional for Windows

On-Screen Keyboards & Utilities for any
pointing device Built-in Layouts, Logon
Utilities, Developer Tools, and Support.

My-T-Soft® TS for Terminal Services

On-Screen Keyboards for Terminal Server /
Terminal Services

TouchRight Utilities

Right Click Access for Pens & Touchscreens

**Assistive Technology
Division Products...**

Enabling Tools for Special Needs

AT Accessibility Suite

IMG's Assistive Technology Software with site
license options

Joystick-To-Mouse

The Software That Lets You Run Windows
With A Joystick!

My-T-Mouse®

The Software That Makes Your Mouse a Mouse That Types! Indispensable & Utilities for any Mouse or Trackball

OnScreen

Special Features for disabled & impaired users
Word Prediction / Word Completion / Window Control / Scanning

OnScreen with CrossScanner

Complete control of Windows from a single switch! Support for Keyboard, Mouse, Joystick interfaces

SmartClick

Operate Windows without the need to Press/Click a Button

The Magnifier

Area and Full Screen Magnifier, Cursor Locator, Visual Aids

WordComplete

Word Completion, adaptive word prediction,
Word List Management, etc. Type Better, Type
Less - we do the rest!

For further information...

Contact your Local Software Dealer

or

Innovation Management Group, Inc.

179 Niblick Road #454

Paso Robles, CA 93446

USA

1-800-889-0987 (US & Canada)

+1-818-701-1579

+1-818-936-0200 (fax)

<cs@imgpresents.com>

<http://www.imgpresents.com>

<http://www.my-t-mouse.com>

<http://www.my-t-pen.com>

<http://www.my-t-soft.com>

<http://www.my-t-touch.com>

<http://www.onscreen-keyboard.com>

<http://www.build-a-board.com>

<http://www.joystick-to-mouse.com>

<http://www.themagnifier.us>

For International Contacts, please see Web Site...

My-T-Mouse[®], My-T-Pen[®], My-T-Touch[®] and My-T-Soft[®] are registered trademarks of Innovation Management Group, Inc.

Part II. Using SmartClick

Description of how to operate and configure SmartClick.

Description of how to operate and configure SmartClick.

Chapter 3 - SmartClick contains general operation information

Chapter 4 - SmartClick Setup details all of the configuration options and dialogs available

to configure and setup SmartClick.

Chapter 4 - SmartClick Palette outlines the various options accessible from the SmartClick Palette, and provides details on clicking, dragging, moving, and operating SmartClick.

Chapter 3. SmartClick Operation

SmartClick Operation Notes

SmartClick is designed to operate seamlessly with Windows. However, due to limitations in the various releases of Windows by Microsoft, the following notes identify some issues that may affect operation. It may be worthwhile to verify you are on the most recent service pack for your current version of Windows.

Basic Operation

When Active, SmartClick will perform a mouse left-click after the dwell time expires (dwell time settable in SmartClick preferences). You must move the mouse

outside of the Jitter distance (also in SmartClick preferences) to reset the timer. To select double-click, drag, or other options hover over the SmartClick palette icon, and the item will be highlighted once selected. Now move to the location you wish to perform the operation (e.g. double-click), and hover until the dwell time expires - the selected action will occur at the new location. The palette icons, layout, colors, configuration, etc. may all be set within SmartClick preferences.

Desktop

Taskbar - it is highly recommended that the Auto-Hide option be turned Off on the Taskbar (Taskbar Properties / Taskbar & Start Menu Settings).

SmartClick Options (Icon on Taskbar)

You can quickly get at the following options by clicking on the SmartClick Icon: SmartClick

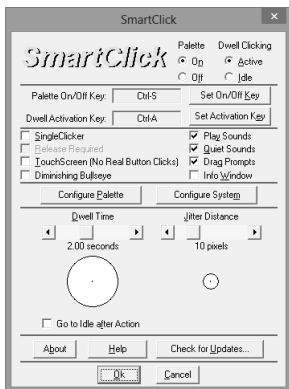
Visible, SmartClick Active, SmartClick Preferences, Direct Select Menu, Display Info Window, and Single Action Only.

Play Sounds

If Play Sounds is On while using SmartClick, it may affect other sound events in the system - Windows Event sounds (Program open/close, Menu selections, etc.), Text-To-Speech, etc.

Chapter 4. SmartClick Setup

SmartClick Setup



Palette

Dwell Clicking

Set On/Off Key

Set Activation Key

Single Clicker

Release Required

TouchScreen (No Real Button Clicks)

Play Sounds

Quiet Sounds

Drag Prompts

Info Window

Configure Palette

Configure System

Dwell Time

Jitter Distance

Go to Idle After Action

About shows information about SmartClick including version and release details.

Help opens this help document.

Check for Updates... uses the IMG Download Manager to access support and updates via the internet.

For Help on Help, Press F1

SmartClick Palette

On - the SmartClick Palette will be visible on screen

Off - the SmartClick Palette will not be visible on screen.

Here you also have the option of setting how SmartClick will open Visible or Hidden.

Checking the option On will force SmartClick to open Visible. Remember that SmartClick will always open in whatever state it was in when it is closed (or Windows is Shut Down).

Dwell Clicking

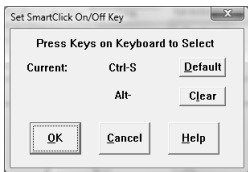
Dwell Clicking

Active - Dwell clicking is active, and all the palette buttons are visible and functional. Idle - Dwell clicking is inactive, and only the Move and Active/Idle buttons are visible.

Here you also have the option of setting how SmartClick will open (Active or Idle). Checking the option On will force SmartClick to open in Active. Remember that SmartClick will always open in whatever state it was in when it is closed (or Windows is Shut Down).

NOTE: During an Idle state, the dwell clicking feature will not function anywhere else on the screen, but it will still be functional only over the SmartClick Palette buttonsSmartClick_Buttons.

Set On/Off Key



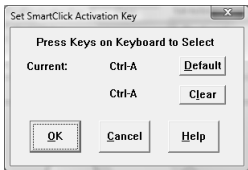
Set On/Off Key

The SmartClick On/Off key is used to toggle the SmartClick Palette from a visible mode, to a hidden mode while SmartClick is running within Windows. Within Setup, you may select

the On/Off Key (or combination of keys) used to Show/Hide SmartClick. You may use keys F1 through F12, 0 through 9, and A through Z, by themselves, or in any combination with Ctrl, Shift, and/or Alt. Make sure SmartClick is not running when you select the On/Off Key.

Set Activation Key

Set Activation Key



The Activation key is used to toggle SmartClick from an active mode (awake), to an inactive mode (sleeping) while SmartClick is

running within Windows. Within Setup, you may select the Activation Key (or combination of keys) used to Activate/De-Activate SmartClick. You may use keys F1 through F12, 0 through 9, and A through Z, by themselves, or in any combination with Ctrl, Shift, and/or Alt. Make sure SmartClick is not running when you select the Activation Key.

Single Clicker

Single Clicker

When selected On, this enables special handling of double-clicks, drags, right-clicks, etc., so a user that can single click (but not double-click or right click) can access SmartClick options. For example, with SingleClicker On, to double click, point to the Double-Click icon on SmartClick and Click,

then point to the icon on screen, and Click. A Double-Click will be generated by SmartClick. This option disables the normal dwell (point & hover) approach used by SmartClick.

Release Required

Release Required

When selected On, this will require the release of the Mouse Button to begin the SmartClick action.

Important: No SmartClick action will occur until the Button or Key is released. The Single Clicker option must be turned On to enable the Release Required option.

TouchScreen (No Real

Button Clicks)

TouchScreen (No Real Button Clicks)

The Touchscreen option changes the way SmartClick handles positioning & operation. In general, during Touchscreen operation, the mouse pointer doesn't move from one location to another the way a physical mouse does - it jumps from touched location to touched location. When operating in this way, SmartClick prevents the mouse click that would result from a touchscreen touch (normal touchscreen operation), and allows a touchscreen user to operate with SmartClick.

Play Sounds

Play Sounds

This turns on/off the system sound that SmartClick generates upon clicks.

IMPORTANT NOTE: If Sound is On while using SmartClick, it may affect other sound events in the system - Windows Event sounds (Program open/close, Menu selections, etc.), Text-To-Speech, etc.

Quiet Sounds

Quiet Sounds

When selected On, the softer (quieter) version of the mouse click sounds will be played by SmartClick.

Important: The Play Sounds option must be turned On to enable the Quiet Sounds option.

Drag Prompts

Drag Prompts

This turns on/off the sound that SmartClick generates during Drag mode. When selected On, SmartClick will generate a prompting sound to choose a beginning point, and a destination point to drag your cursor.

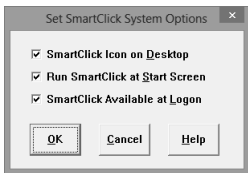
Important: The Play Sounds option must be turned On to enable the Drag Prompts option.

Info Window

Info Window

When selected On, an information window showing the dwell countdown timer (in seconds) and the current clicking mode selected will follow your windows pointer.

Configure System



There are 3 options available: SmartClick Icon on Desktop, Run SmartClick at Start Screen, and SmartClick Available at Logon

SmartClick Icon on Desktop

When selected, this option will display an icon on the Desktop. This is the "All Users" Desktop, so it will be available for all users. You may need correct permissions to apply this, if user is a limited user.

Run SmartClick at Start Screen

When selected, this option will enable an Ease

of Access option to start SmartClick at the Start Screen. You may need correct permissions to apply this, if user is a limited user.

SmartClick Available at Logon

When available, this option will run SmartClick at logon (if logon screen in use), and also make SmartClick available for use in secure situations (Administration dialogs) when User Account Control is enabled. To apply this setting, Administration permissions are required, so if user is a limited user and User Account Control is enabled, an dialog requiring permission will be shown, and proper credentials are required to apply this setting.

Technical Notes on Windows 8 Run at Start Screen option: The Run at Start Screen option runs SMCADMIN.exe (or SMCADMIN64.exe in 64-bit versions). For certain User Account Control settings, you

may be prompted to allow this to run when the menu option is selected. When run, it will set or clear registry settings for this Ease of Access option (if set, they will be cleared, if clear, they will be set). When set, the Ease of Access option can be seen for configuring mouse/keyboard as "Enable SmartClick Ease of Access Start Screen Options". This option can be disabled via Control Panel | Ease of Access Center, but the SmartClick menu option will still be checked. The SMCADMIN utility when run via this menu option establishes the appropriate Ease of Access registry settings, or removes/deletes them. The SmartClick Windows menu option is checked when the registry entries exist, separate from whether the option is enabled/disabled.

Dwell Time

Dwell Time

This is the number of seconds the Windows pointer has to dwell over an area before a SmartClick action occurs. The dwell timer will start to countdown to 0, if the Windows pointer has stopped movement over an area of the screen. If the Windows pointer moves before the dwell countdown timer reaches to 0, the dwell countdown timer will reset back to its dwell time setting and no SmartClick action occurs.

Move the slider to the left to decrease the dwell time wait, and move the slider to the right to increase the dwell time wait.

Hover over the white circle to test with the current dwell setting to verify the current dwell time.

Jitter Distance

Jitter Distance

Jitter distance is used to compensate for slight movements by the Windows pointer when dwelling over an area of the screen. The dwell timer will not reset as long as the Windows pointer stays inside the jitter distance radius.

Move the slider to the left to decrease the jitter distance radius, and move the slider to the right to increase the jitter distance radius.

Go to Idle After Action

Go to Idle After Action

This option forces SmartClick to automatically go to idle after a click or other action is performed.

Check this option On to enable the automatic go to idle after action feature, clear this option to act normally (and keep SmartClick active). The automatic Go To Idle is only implemented for the following SmartClick actions:

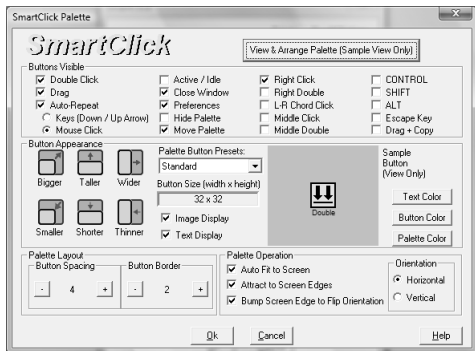
- Left Click
- Drag
- Left Double-Click
- Middle Click
- Middle Double-Click
- Right Click
- Right Double-Click
- Left-Right Chord Click

Note: If this option is On, it is recommended to select the Active/Idle icon for the Palette.

Chapter 5. SmartClick Palette

SmartClick Palette

SmartClick Palette



SmartClick Buttons

View & Arrange Palette

Button Appearance

Palette Layout

Palette Operations

SmartClick Buttons

SmartClick Buttons

Double Click

Drag

Auto-Repeat

Preferences

Hide Palette

Move Palette

Active/Idle

Close Window

CONTROL Key

SHIFT Key

ALT Key

ESCAPE Key

Right Click

Right Double

L-R Chord Click

Middle Click

Middle Double

Double Click

Double Click



This turns on/off your ability to perform a double-click. SmartClick then sends a double-click to whatever application you're in.

Drag

Drag



This turns on/off your ability to perform a Drag. When selected on, dwell over the item you want to drag first, then drag the item to the area you want to move the item, and then dwell over the area to let go of the item.

Auto-Repeat

Auto-Repeat



When Auto-Repeat is Enabled, Automatic Mouse-Clicks or Down/Up Arrow keystrokes will be sent to whatever application you're in, the frequency of the mouse clicks or keystrokes depends on the value of the Dwell Time. This is ideal for reading text, scrolling documents & browsing on-line information.

These options are available when Auto-Repeat is enabled.

Keys (Down / Up Arrow) - When Auto-Repeat is enabled, using this option will allow you to send the Down/Up Arrow keystrokes will be sent to your application. Clicking on the Auto-Repeat button on the SmartClick Palette

will let you choose to send the Down Arrow keystrokes, clicking on it again will switch to the Up Arrow keystrokes, then clicking on it the third time will disable Auto-Repeat.

Mouse Click - When Auto-Repeat is enabled, the current mouse click mode will be repeated.

Preferences

Preferences

This button will bring up the SmartClick Setup.

Hide Palette

Hide Palette



Use this button to hide the SmartClick Palette.
Use the chosen On/Off keySet_On_Off_Key or
choose the SmartClick Visible option in the
SmartClick Taskbar Icon to show the
SmartClick Palette back on the screen.

Move Palette

Move Palette



Use this button to move the SmartClick Palette
to a different position on the screen.

Active/Idle

Active/Idle



Use this button to toggle between an active mode (awake), to an idle mode (sleeping) while SmartClick is running within Windows.

NOTE: During an Idle state, the dwell clicking feature will not function anywhere else on the screen, but it will still be functional only over the SmartClick Palette buttons.

Close Window

Close Window



This button will close the current active application, window, or message box.

CONTROL Key

CONTROL Key



This toggles the CONTROL keyboard key in a down or up position.

SHIFT_Key

SHIFT Key



This toggles the SHIFT keyboard key in a down or up position.

ALT Key

ALT Key



This toggles the ALT keyboard key in a down or up position.

ESCAPE Key

ESCAPE Key



Clicking on this button will simulate an ESCAPE key button press, the same function as pressing and releasing the ESCAPE key on the actual physical keyboard.

Right Click

Right Click



This turns on/off your ability to perform a right-click. SmartClick then sends a right-click to whatever application you're in.

Right Double

Right Double



This turns on/off your ability to perform a double right-click. SmartClick then sends a double right-click to whatever application you're in.

L-R Chord Click

L-R Chord Click



This turns on/off your ability to perform an L-R chord-click, a chord click is a sequence of

left mouse button down, right mouse button down, left mouse button up, then right mouse button up. SmartClick then sends an L-R chord-click to whatever application you're in.

Middle Click

Middle Click



This turns on/off your ability to perform a middle-click. SmartClick then sends a middle-click to whatever application you're in.

Middle Double

Middle Double



This turns on/off your ability to perform a double middle-click. SmartClick then sends a double middle-click to whatever application you're in.

View & Arrange Palette

View & Arrange Palette

Use this option to view SmartClick with the current user settings and arrange the order of the SmartClick buttons on the palette.

When viewing the sample palette, you may drag & drop palette icons in any order you desire (from the currently selected options)

Button Appearance

Button Appearance

Bigger - Increase the width and height of a button by 1 pixel.

Taller - Increase the height of a button by 1 pixel.

Wider - Increase the width of a button by 1 pixel.

Smaller - Decrease the width and height of a button by 1 pixel.

Shorter - Decrease the height of a button by 1 pixel.

Thinner - Decrease the width of a button by 1 pixel.

Palette Button Presets

Standard - Button size of 32 x 32, and both text and image are displayed.

Small - Button size of 16 x 16, and both text and image are displayed.

Large - Button size of 48 x 48, and both text and image are displayed.

Text Only - text are used instead of images to label the buttons.

Custom - User defined settings for the buttons.

Button Size - Current width and height of a button, the size are measured in pixels

Image Display - When checked on, an image will be used to show as the label for the buttons. When selected off, a text representation of the buttons will be used.

Text Display - a text label of the buttons will be shown below the button image

Text Color - font color of the text, only applies when Text Display is enabled

Button Color - background color of the buttons

Palette Color - background color of the SmartClick Palette

Palette Layout

Palette Layout

Button Spacing - space size in between each buttons

Button Border - border size around the palette buttons

Palette Operations

Palette Operations

Auto Fit to Screen

Attract to Screen Edges

Bump Screen Edge to Flip Orientation

Orientation

Auto Fit to Screen

Auto Fit to Screen

When selected on, SmartClick will resize itself to fit the within the screen resolution whenever it needs to resize (typically on a orientation change, or when icons are added or removed).

Attract to Screen Edges

Attract to Screen Edges

When selected on, SmartClick will automatically move itself to the edge of the screen when it is moved close to the screen's edges.

Bump Screen Edge to Flip Orientation

Bump Screen Edge to Flip Orientation

When selected on, SmartClick will automatically switch its orientation (horizontal/vertical) when its edges touch the appropriate screen edge.

Orientation

Orientation

Horizontal - the SmartClick Palette will be shown as a horizontal bar.

Vertical - the SmartClick Palette will be shown as a vertical bar.

Part III.
SmartClick
Technical
Documentation

Advanced User
Notes, Technical
Documentation,
File Information,
and various Other

Information about SmartClick.

Chapter 6 - Advanced User Notes details additional product information, Final Release Notes, Technical Notes, Developer information, product history, and Customer Suggestions.

Chapter 6. SmartClick Advanced Notes

SmartClick Advanced Notes

SmartClick Advanced Notes

IMPORTANT: These notes are intended for the extremely advanced and technical user and/or System Administrator. There is absolutely no need for the end-user of SmartClick to read these notes.

The mouse input control & hardware event generation is handled by the same technology that runs SmartClick's My-T-Soft family (including OnScreen My-T-Touch, My-T-Pen,

and the original on-screen keyboard for windows, My-T-Mouse), Joystick-To-Mouse, Macrobat, and RJ Cooper's CrossScanner.

The SmartClick palette is a topmost window, and should operate as intended with all normal windows applications. The SmartClick palette may go behind other topmost windows such as OnScreen, or other on-screen windows. If necessary, position the SmartClick palette in such a way that any conflict is minimized.

For trainers and general users, the SmartClick palette may be clicked on and operate with single mouse left clicks (in addition to the dwell capability). By clicking on borders (non-icon areas), SmartClick can be moved (in addition to the move icon).

Swapping mouse buttons in the Window Control Panel will not greatly affect SmartClick. Left clicks mean the main mouse button, and right-clicks means the secondary,

or context selection mouse button.

SmartClick Final Release Notes

Final Release Notes / Version history:

The 1.50 version is the first public release of SmartClick. May 24, 2004

SmartClick 1.60 version provides support for Windows Vista / Windows 7. July 16, 2009.

SmartClick 1.60 Release 2 provides support for User Account Control and Logon access for Windows Vista. August 5, 2009.

SmartClick 1.60 Release 4 synchronizes with the IMG Products Disc (there is no Release 3) and includes updates for Windows 7. November 24, 2009

SmartClick 1.60 Release 5 - updates to the License Manager. September 17, 2012

SmartClick 1.70 - Windows 8 Compatibility. October 18, 2013

SmartClick 1.70 Release 2 - IMG Personal License. February 14, 2014

SmartClick 1.70 Release 3 - 11/7/2014

SmartClick Settings / INI / Registry Notes

Settings (INI File / Registry Notes)

The following logic is used to manage SmartClick settings:

The initial defaults are in the SMARTCLK.INI file.

SmartClick can run exclusively from the INI file. This is accomplished by setting the `DoNotUseRegistry=1` in the [Settings] section. This approach will use the SMARTCLK.INI file to hold all settings & configuration information. This approach means that every user of SmartClick on the machine SmartClick is installed on will have the same settings.

SmartClick can use the registry to hold different settings for different users. If `DoNotUseRegistry=0` in the SMARTCLK.INI file, then the INI file will be used to establish the initial defaults, but from then on settings will be saved in the registry under the current user (e.g.

`HKEY_CURRENT_USER\SOFTWARE\Innovation Management Group, Inc.\SmartClick`). This approach means that different users on the same machine can have customized settings.

The following documents the entries in the

registry / INI file. The section (e.g. square-brackets heading) corresponds to a sub-key in the registry.

Version=1.70

Registry Only, used to track version of software installed - if this is different than the current running version, an automatic update will occur based on the current release.

[Settings]

DoNotUseRegistry=0

INI file only. If DoNotUseRegistry=1, then all settings will be saved in the INI file. If DoNotUseRegistry=0, then the INI settings will be used only as the original default settings to establish the current users original settings.

DisplayWindow=0

This is used to track whether the Info file (countdown display window) is visible. 1 is

Yes, 0 is No.

`DragPrompts=1`

Sound setting. If `DragPrompts=1`, then spoken drag prompts are played during the drag sequence. Set `DragPrompts=0` to bypass these.

`DwellTime=1500`

This is the dwell time in milliseconds, e.g. hover time to wait within Jitter distance prior to a click event. 1000 is 1 second.

`Jitter=10`

This is the distance in pixels

`MenuCount=40`

This is an internal setting for delays while the SmartClick menu is visible. A larger number means a longer delay.

`Mode=16777217`

Chapter 6. SmartClick Advanced Notes

This is an internal setting used to track SmartClick's status, and visible icons. It should not be modified.

PlaySounds=1

If PlaySounds=1, then click & double-click sounds will be played at each SmartClick event

QuietSounds=1

This is available if PlaySounds=1. When QuietSounds=1, a softer, quieter sound will be played for clicks and double-clicks.

ReleaseRequired=0

This is available only if SingleClicker=1. By default, SingleClicker actions will occur on the down button event. If ReleaseRequired=1, then the SingleClicker action will require the down, then up button events.

SingleClicker=0

If SingleClicker=1, then the SingleClicker mode is in use. This bypasses the hover/dwell wait time for event, and expects the user to perform a single click to activate the SmartClick action. Primarily used when a user can single click, but can't double-click or right-click. TouchScreen and SingleClicker are mutually exclusive, and TouchScreen should be 0 if SingleClicker=1.

SingleOnly=0

This is a setting (only available in menu from tray icon) that when enabled, performs the SmartClick action, then goes into an idle state. Due to changes in SmartClick's operation, it is not supported, and may not be fully functional. It is an obsolete setting, it should not be modified.

StartCount=30

This is an internal setting for delays - it is

overridden internally based on the dwell setting. It is an obsolete setting, it should not be modified.

TouchScreen=0

If TouchScreen=1, then the touchscreen mode is in use. TouchScreen and SingleClicker are mutually exclusive, and SingleClicker should be 0 if TouchScreen=1.

Palette Icon Notes:

For entries in the palette that are actual Palette Icons to display, the actual value is used to indicate the order. Left most/top most is 1, next is 2, third is 4, fourth is 8, etc. Internally a 32 bit value is used to track modes & the order of the icons, so a value as a power of 2 is required.

ColorRef Notes

ColorRef entries are 0x00BBGGRR entries in Hex, where BB is Blue entries, GG is Green

entries, and RR is Red entries. For example, 0x00FFFFFF is white.

[Palette]

Activate=32

This is the palette icon Active/Idle (SmartClick Light bulb)

Alt=0

This is the palette icon Alt key

AutoFit=1

AutoFit=1 means the automatic resize to screen upon orientation flip will occur.

AutoKeys=0

This setting determines the auto-repeat mode of operation. If AutoKeys=1 then the down/up keys will be used when in Auto-Repeat.

If AutoKeys=0, then the mouse click will be repeated.

AutoRepeat=8

This is the palette icon for Auto Repeat

BumpFlip=1

If BumpFlip=1, then the automatic switching of orientation is enabled, and an automatic switch in orientation will occur when pushed onto the opposite screen edge, e.g. if horizontal, you will flip to vertical when the left or right side of the screen is bumped.

ButtonBorder=2

This is the border between the buttons and the palette edge in pixels.

ButtonColor=65535

This is the color of the button background. It is a ColorRef entry, displayed in decimal.

ButtonHeight=32

This is the button height in pixels.

ButtonSpacing=4

This is the pixel spacing between buttons on the palette

ButtonWidth=32

This is the button width in pixels.

ChordClick=0

This is the palette icon Left-Right chord click

CloseWindow=16

This is the palette icon close active window

Control=0

This is the palette icon Control key

DoubleClick=1

This is the palette icon DoubleClick

Drag=2

This is the palette icon Drag

EscapeKey=0

This is the palette icon for the Escape key

HidePalette=0

This is the palette icon for Hide Palette

ImageDisplay=1

This setting indicates whether there is an image (palette icon) displayed on the palette for the corresponding palette icon.

MiddleClick=0

This is the palette icon for Middle click

MiddleDoubleClick=0

This is the palette icon for Middle double click

MovePalette=64

This is the palette icon for move palette

PaletteColor=12632256

Chapter 6. SmartClick Advanced Notes

This is the color of the palette background. It is a ColorRef entry, displayed in decimal.

PaletteType=0

The palette type is used by SmartClick Preferences to track small, medium, large, or custom.

PaletteX=443

PaletteY=263

These are the opening (top/left) position of the SmartClick palette.

Preferences=128

This is the palette icon for SmartClick Preferences

Reserved1=0

Reserved2=0

Reserved3=0

Reserved4=0

Reserved5=0

Reserved6=0

Reserved7=0

Reserved8=0

Reserved9=0

These are reserved entries for additional palette icons.

RightClick=4

This is the palette icon for right click

RightDoubleClick=0

This is the palette icon for right double click

Shift=0

This is the palette icon for shift key

SingleClick=0

This is an original setting for the left click. It is an obsolete setting, it should not be modified.

`SnapToEdge=1`

If `SnapToEdge=1`, then when `SmartClick` is within `SnapToEdgePixels` of an edge, `SmartClick` will "attract" to the edge.

`SnapToEdgePixels=15`

This is number of pixels the `SmartClick` palette must be from a screen edge in order to "snap" to the edge.

`TextColor=0`

This is the color of the text on the palette. It is a `ColorRef` entry, displayed in decimal.

`TextDisplay=1`

If `TextDisplay=1`, then the text is visible on the palette. If `TextDisplay=0`, then no text is used, only the image.

`Vertical=0`

This indicates the orientation of the palette.

Vertical=0 means the palette is horizontal, and
Vertical=1 means the palette is vertical.

WheelDown=0

WheelUp=0

X1Click=0

X2Click=0

These entries are reserved for additional palette icons, not used.

[Keyboard]

ActivationKey=Ctrl-A

This is the setting for the keyboard control (e.g. Ctrl-Down A Ctrl-Up) used to toggle the active/idle state of SmartClick.

OnOffKey=Ctrl-S

This is the setting for the keyboard control (e.g. Ctrl-Down S Ctrl-Up) used to toggle the visible/not visible state of SmartClick.

[Display]

DisplayChangeEnabled=2

The DisplayChangeEnabled is a setting to handle changes in resolution when SmartClick is running. DisplayChangeEnabled=0 means that no SmartClick action is taken.

DisplayChangeEnabled=1 means that a basic approach is used to handle changes, and DisplayChangeEnabled=2 means a "smart" algorithm is used to handle repositioning.

SmartClick Copyright © 2003-2014 Innovation Management Group, Inc.

All Rights Reserved.

SmartClick Files & File Notes

& Installation Information

SmartClick Files & File Notes

Files located in the \Program Files\SmartClick Installation Directory:

The following files are **REQUIRED** for proper operation of

SmartClick: (Version specific files indicated)

* - indicates the minimum files required for functional operation of SmartClick

- SmartClick.EXE* - SmartClick executable

- SMARTCLK.INI* - SmartClick Initialization File

- SMARTCLK.ORG - Original SmartClick Initialization File

- IMGVERS.DLL* - IMG Dynamic Link Library

Chapter 6. SmartClick Advanced Notes

- HELP*.html, HELP\IMAGES*.png - SmartClick Help
- LICENSE.EXE* - IMG License Manager
- LICENSE2.EXE* - IMG License verification only (read-only access)
- LICENSE.LIC* - IMG License File
- LICENSE.ORG - Original IMG License File
- MANIFEST.TXT - Reference File from Build
- MYTSLIB.DLL* - Support user interface Dynamic Link Library
- README.TXT - Product Installation text file
- SCADMIN.exe - Administrator utility to configure Logon DLL interface
- SCADMIN64.exe - 64-bit version of SCADMIN.exe
- SCCFG.exe - SmartClick Setup file

Chapter 6. SmartClick Advanced Notes

- SCSEVER.exe - Mouse click/user interface server
- SC_CTRL.EXE - Developer Kit example of external control file
- SmartClick.asInvoker.exe - SmartClick executable with asInvoker manifest
- SmartClick.exe - SmartClick executable file (asInvoker)
- SmartClick.highestAvailable.exe - SmartClick executable with highestAvailable manifest
- SmartClick.requireAdministrator.exe - SmartClick executable with requireAdministrator manifest
- SmartClickLogon.dll - Logon interface Dynamic Link Library (Credential Provider interface)
- SmartClickLogon.x64 - 64-bit version of

SmartClickLogon.dll

- SMARTCLICK_RUN.exe - Ease of Access
- SMCADMIN.exe - Administrator utility to configure Start Screen interface
- SMCADMIN64.exe - 64-bit version of SMCADMIN.exe
- IMGUTIL.EXE - used for installation and uninstallation of software
- UNZIP32S.DLL - Dynamic Link Library for installation and updates

Other Folders:

- MANAGER\ESTABLISH.EXE - this is a post installation utility that establishes or updates the IMG Download Manager and IMG License Manager files as outlined below.

Located in \Program Files\Common Files\Innovation Management Group\Download Manager directory:

- IMGCLEAN.EXE - used to complete uninstall of software, required for Control Panel Add/Remove Programs

- IMGDLM.EXE - The IMG Download Manager - Installed by
MANAGER\ESTABLISH.EXE

- IMGNET.DLL - The IMG Download Manager Library - Installed by
MANAGER\ESTABLISH.EXE

Located in \Program Files\Common Files\Innovation Management Group\License Manager directory:

- LICENSE.DLL - library used by the IMG License Manager and IMG Download Manager

SmartClick Command Line

Options

This section documents the available Command Line options. Typically this is appended to the startup command (Target), i.e. "C:\Program Files\SmartClick\SC.exe SOMEOPTION" in the shortcut.

NOSPLASH

The NOSPLASH option can be placed on the command line / startup shortcut, and this will force the splash screen to be bypassed and not shown.

TOUCHSCREEN

The TOUCHSCREEN option can be placed on the command line / startup shortcut, and this will force the check for the physical mouse to be bypassed and no warning/failure will occur, so SmartClick can be run on a system without a physical mouse.

Note: When SmartClick is started via the "Run at Start Screen" option, the SMARTCLICK_RUN.exe is used to launch SmartClick, so using this command line is not possible. As an Administrator, if a file named TOUCHSCREEN.INI is created (file contents are not used, only the files existence) in the same folder as SmartClick.exe (e.g. \Program Files\SmartClick), then this will act as if the command line option is used.

Index

A

Active Idle,
86

Add/Remove
Programs, 4,
22

ALT Key, 88

Attract to
Screen Edges,
96

Auto Fit to
Screen, 96

Auto Repeat ,
83

Automatic
Idle, 76

B

Bump Screen
Edge to Flip
Orientation,
97

Button
Appearance,
93

C

Catalog, 50

CD
(CD-ROM or
DVD), 1, 19

Certificate of
Authenticity,
1, 19

Close
Window, 86
Command
Line, 125
Commonly
Asked
Questions, 46
CONTROL
Key, 87
Copyrights, 9
Customer
Service, 48
Customer
Support, 47

Desktop Icon,
72
Display, 46
Double Click,
81
Drag , 82
Drag Prompts,
71
Drivers, 47
DVD
(CD-ROM or
DVD), 1, 19
Dwell Time,
75
DwellClicking,
64

D

Default
Settings, 104

E

Ease of

Access, 72
equipment, 18
ESCAPE Key,
88
Evaluation
License, 32

F

Features, 16
File Notes,
120
Files -
Product Files
Installed, 120
Final Release
Notes, 103

G

General
Information,
11, 13
Guide
(Using), 10

H

hard disk
space, 18
hardware
requirements,
18
Hide Palette,
84

I

Idle After
Action, 76

IMG, 24, 26

IMG Personal
License, 26

Important
User
Information,
10

Info Window,
71

INI Settings,
104

Innovation
Management
Group, Inc.,
48

Install

Installing,
4, 22

Installing /
Un-
Installing,
19

IPL (IMG
Personal
License), 26

J

Jitter
Distance, 76

L

License Key,
130

1, 19, 26
License
Manager, 26
Licensing, 26
Licensing
Information,
24
Logon screen
(available), 72
LRChord
Click, 90

mouse)
(TOUCH-
SCREEN),
125

Mouse -
Drivers, 47

Move Palette,
85

M

Middle Click,
91
Middle_Double,
91
Mouse (no
physical

N

NOSPLASH
Command
line option,
125

O

Orientation,
97

P

Palette, 63
Palette
Layout, 95
Paletten
Operations, 95
Personal
License, 26
Play Sounds,
69
Preferences,
84
Product
Catalog, 50

Q

Questions
Commonly
Asked
Questions,
46
Quick Start, 1
Quiet Sounds,
70

R

Registry
Settings, 104
Release
Information,
4, 22, 103
Releasv
Required, 68
132

requirements,
18
Right_Click,
89
Right_Double,
90

S

Serial
Number, 1,
19, 26
Set Activation
Key, 66
Set On/Off
Key, 65
Settings, 104
Setup, 4, 45
SHIFT Key,
87

Short-Cut, 16
Single
Clicker, 67
Smart Click
Operation
Notes, 58
SmartClick
Advanced
Notes, 101
SmartClick
Buttons , 80
SmartClick
Palette , 79
SmartClick
Setup
Overview
Notes, 61
Splash screen
(NOS-
PLASH),
125

Start Screen,

72

Support

 Customer

 Support, 47

 website, 47

System

(configure),

72

System

requirements,

18

T

Touch Screen,

69

TOUCHSCREEN

Command

line option,

125

Touchscreen

system, no

mouse, 125

Trademarks, 9

U

Un-Install, 23

Using this

guide, 10

V

Version

information,

103

View Arrange
Palette, 92

W

website, 47
What is
SmartClick,
13
What You
Need, 18
Why Do I
Need
SmartClick?,
15
Windows
Applications,
46